



## Using Hamachi VPN for remote Network License access

Rev 0, Created 29 September 2021

To use Structural Toolkit from a remote location, the network license must be accessible via a Virtual Private Network (VPN).

Hamachi offer a free 5 user network (at the time of this document) which is compatible with Structural Toolkit.

In this document, the following steps will be outlined:

- Setting up a Hamachi VPN account
- Installing Hamachi VPN on the License Manager/Service workstation and creating a Network
- Install the License Tools
- Installing Hamachi access on each workstation
- Configuring the Structural Toolkit on each workstation

Hamachi is a comprehensive solution, and this document details the minimal requirements to get the remote licensing operational. A more comprehensive document can be found here:

[https://secure.logmein.com/welcome/documentation/EN/pdf/Hamachi/LogMeIn\\_Hamachi\\_GettingStarted.pdf](https://secure.logmein.com/welcome/documentation/EN/pdf/Hamachi/LogMeIn_Hamachi_GettingStarted.pdf)



## Setting up a Hamachi VPN account

Go to the Hamachi VPN website <https://www.vpn.net/> and sign up with an email and password with the link in the top right corner.

LogMeIn

Sign up or log in

This is your LogMeIn ID – A single username and password for LogMeIn services.

you@youremail.com.au

weak

I agree to the [Terms](#) and [Privacy Policy](#). I want to receive promotional emails, including product updates, special offers and best practices, unless I [opt out](#).

Create account Cancel

Complete the registration and register the account. This can be done immediately after the first sign up page or via an email for verifying the account, which is sent to the email address that is provided.

LogMeIn

## Complete your registration

First name

Last name

Job title

Telephone

Organization

Which best describes you?

How many computers will you need to access or si

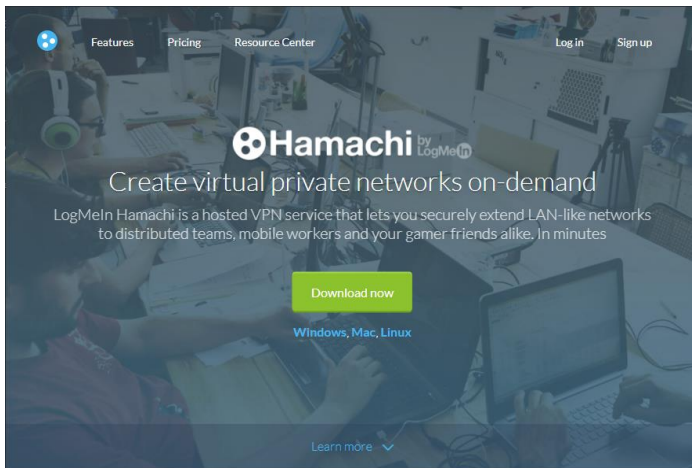
Register Skip



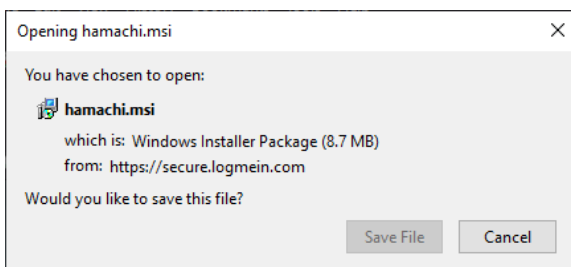
## Installing Hamachi VPN on the License Manager/Service workstation and creating a Network

The Hamachi VPN software must first be installed on workstation running the Structural Toolkit License Manager or Service (this could be a workstation also running the Structural Toolkit program).

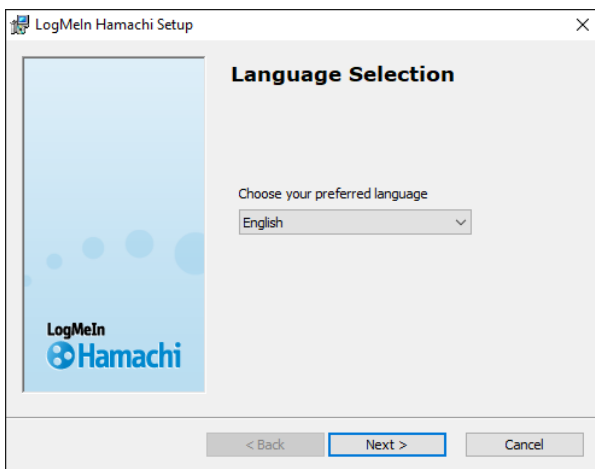
On the PC running the License Manager/Service go to the Hamachi VPN website <https://www.vpn.net/> and press the [Download now] to download the "hamachi.msi" installer. **Do not download** the installer from the LogMeIn Central page "LogMeIn.msi".



Once downloaded, run the file. (You will have to go to your browser's downloads folder and select the file to run).

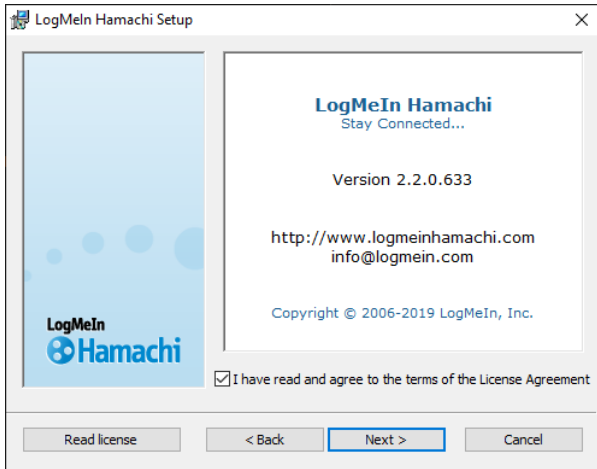


Select the language

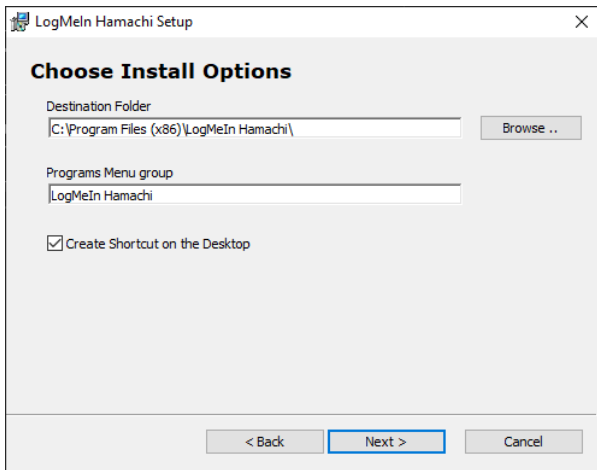




Read the terms and agree (you must agree to install the software)



Select "Create Shortcut on the Desktop"

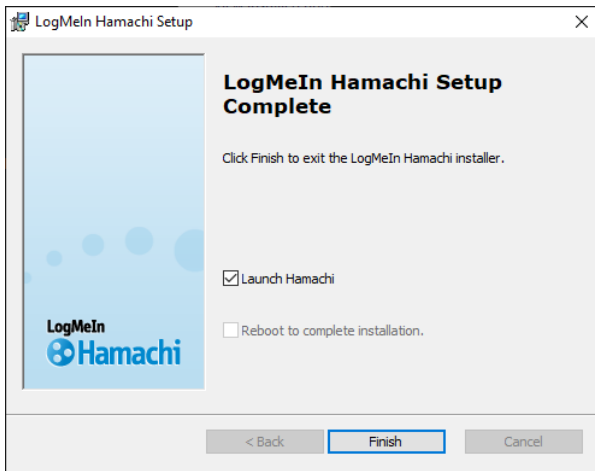


The LastPass is not required to install Hamachi.

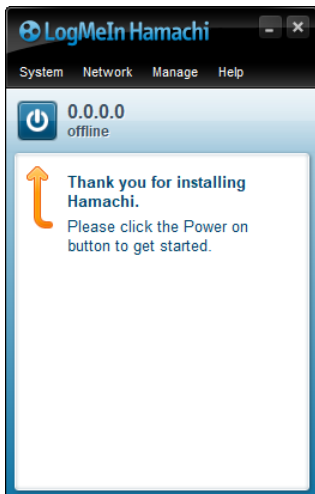




Finally, finish and Launch Hamachi.



The following window will appear. Press the Power button.





You will be asked to Signup or login. Login with the account username and password you setup in the first step.

Login

You must sign up for a LogMeIn ID to complete the installation process.

Already have a LogMeIn ID? Log in now.

Why register?

- Network management and administration
- Improved communication and support
- Stay in the loop on upcoming changes and maintenance
- Ability to create gateway and hub-and-spoke networks

Does someone else manage Hamachi for you? Contact your service provider or [send them an attach request](#) now.

**Log in** or [sign up](#)

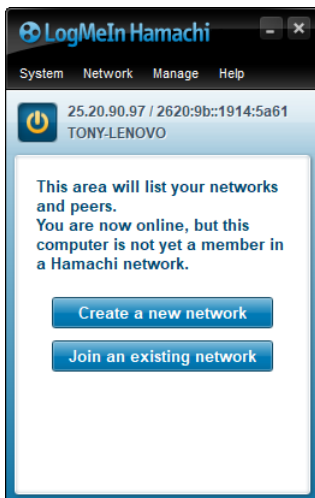
LogMeIn ID:

**Log in**

[Forgot your password?](#)

Now press [Create a new network]





Create the new network name and provide a network password (different to the account login).

Create Network

Create a new client-owned (?) network

Network ID:   
Used to locate and join network.

Password:   
Used to restrict access to network.

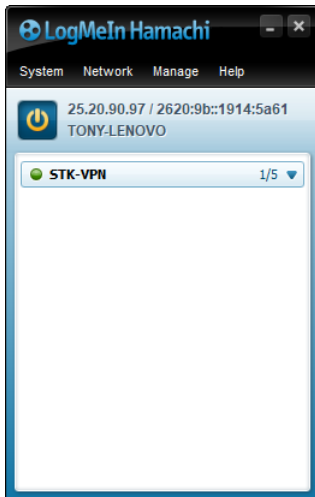
Confirm password:

or

[Log in to create a new managed \(?\) network](#)

Managed networks can be administered centrally on the web, and support advanced functionality such as gateway networks or hub & spoke topology.

The Hamachi will find the new network and show the available Hamachi licenses used.



Make note of the IP address allocated to the PC running the License Manager/Service (In this case 25.20.90.97 which is Hamachi's allocated IP of the workstation which is running the License Manager or Service.).

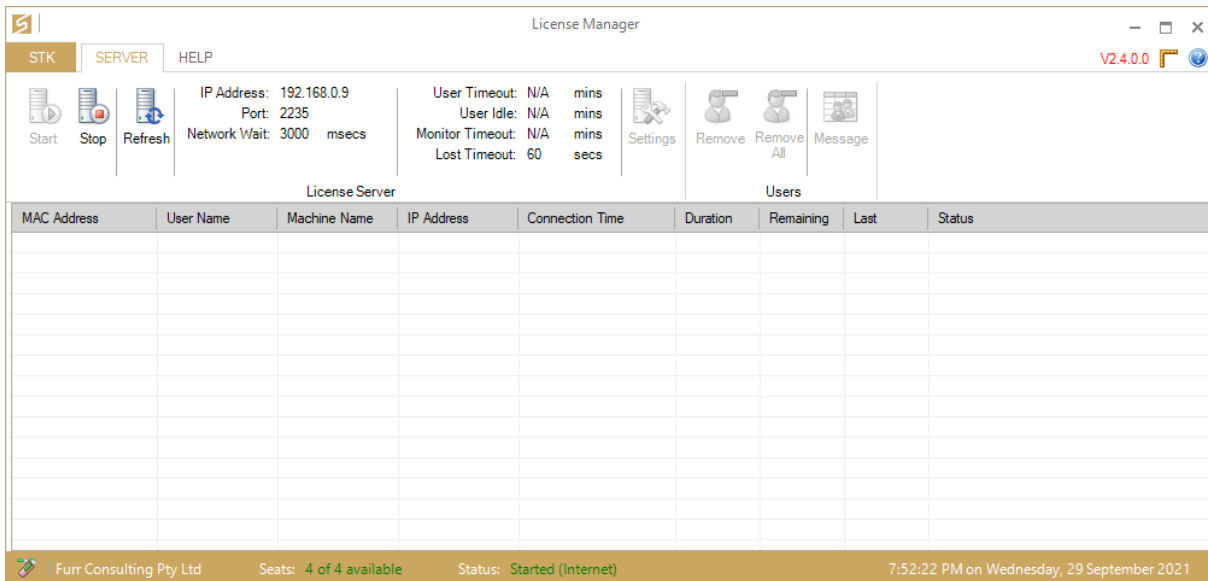


## Install the License Tools

If not done so install the License Tools.

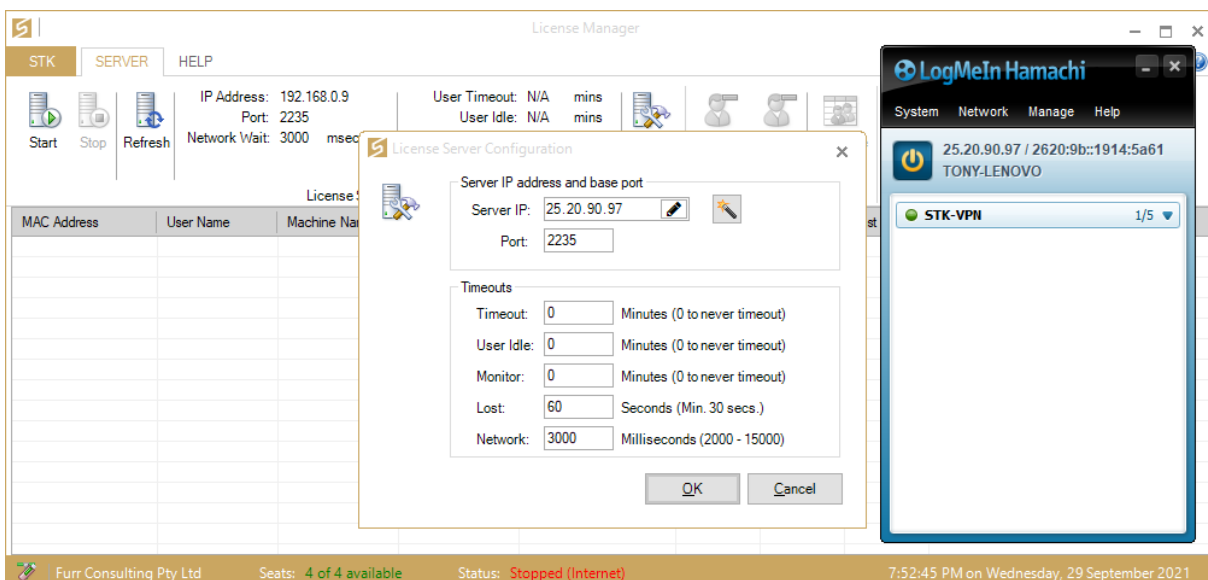
A Quick Start Help can be found on the website, noting that you will not require a Static IP as Hamachi does this during the setup.

<https://www.structuraltoolkit.com.au/downloads/articles/Network%20License%20Quick%20Start.pdf>



Make sure you stop the License Manager using the [Stop], and select {Settings}.

Enter the IP address into the Server IP field, and press [OK] then restart the License Manager using the [Start] button.



If using the service, you will need to stop the service using the Icon in the Tool tray, and manually edit the settings file with administrator privileges found in c:\ProgramData\Anthony Furr Software\Structural Toolkit V5\Structural Toolkit V2 License Service.xml, setting the field with the server's IP: <ServerIP>25.20.90.97</ServerIP>. Then restart the service.



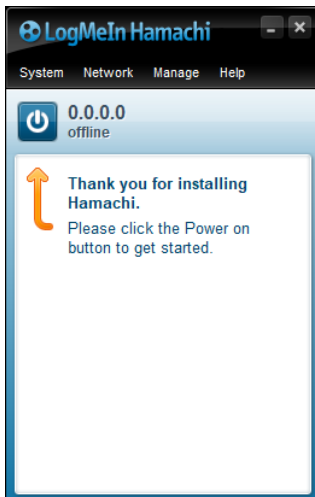


## Installing Hamachi access on each workstation

The Hamachi VPN software is required to be installed on each workstation that is running Structural Toolkit and requiring access to a remote license via Hamachi VPN.

On each PC go to the Hamachi VPN website <https://www.vpn.net/> and repeat the same installation process as for the workstation with the License Manager/Service.

Once complete, start Hamachi, and press the power button.

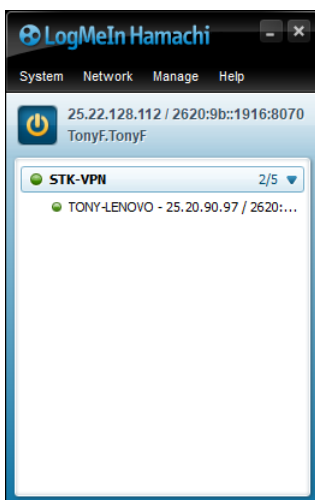




Log in when prompted to do so with the account username and password.

The Join an existing network, entering the License network name and password.

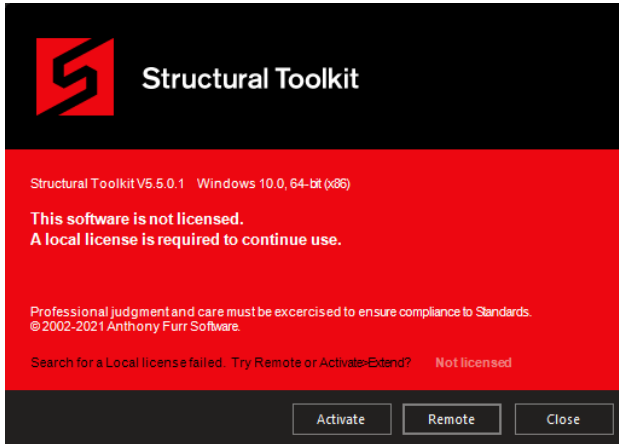
If everything is successful, you will see the new IP of your workstation, and other connected workstations including that the workstation running the License Manager/Service.



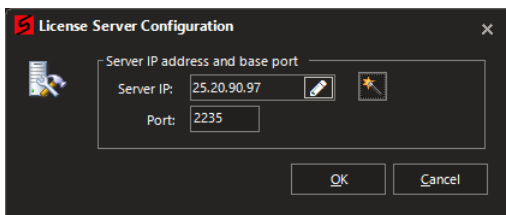


## Configuring the Structural Toolkit on each workstation

Start Structural Toolkit and press the [Remote] button.



Enter the IP address of the workstation running the License Manager/service.



After pressing OK, Structural Toolkit should register the License through the newly created Hamachi VPN.

If you have any questions regarding this document, please contact our Support Team.