



## Moving the License Service

Rev 0, Created 31 May 2021

Moving a Network License to another computer/server is a similar process to first setting up the Network License. This document aims to help users move their Network License to a new computer/server. For a more in-depth guide on how to use a Network License, refer our "Network License Quick Start" document in the [Learning] module of our website – under "Updating and Licensing".

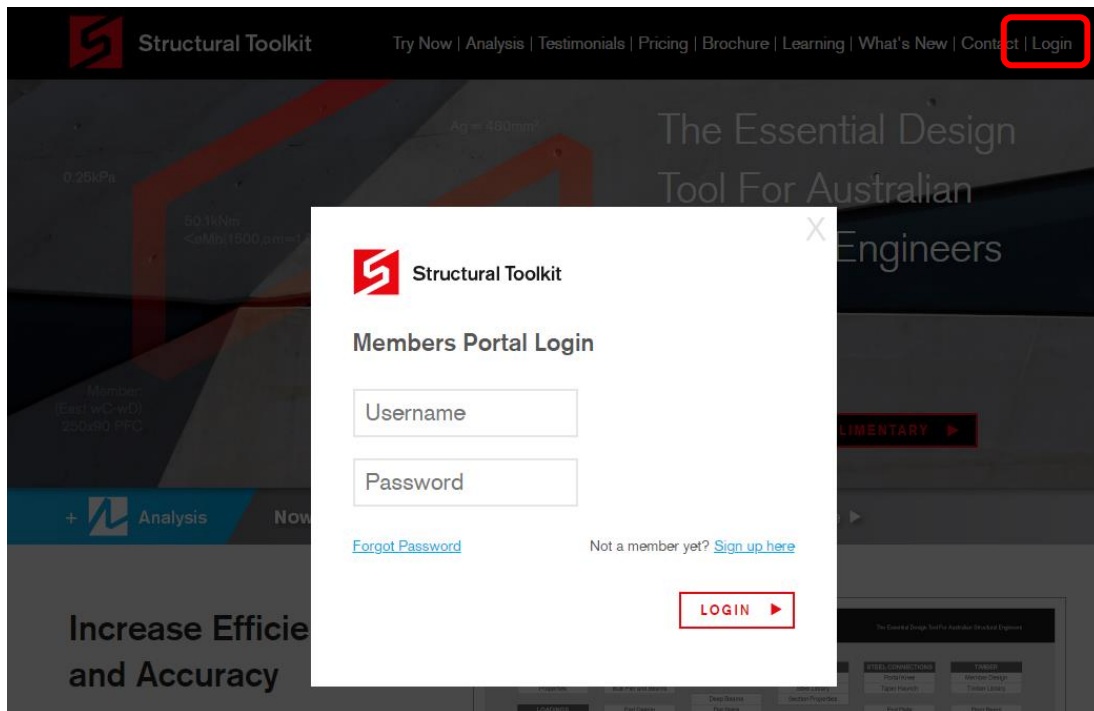
## USB & Static IP

The first step is to move the physical USB to the new server. Ensure when the USB is plugged in that the light is solid (not flashing).

The IP of the new server also needs to be set to static. Refer to our "Setting up a static IP" document on our website – Under "Updating and Licensing".

## Licensing Software

The next step is then to install the licensing software. The download for this can be found in the Members Portal of our website (<https://www.structuraltoolkit.com.au/>). To access this, users need to login using their user information. This is done by clicking [Login] at the top right of the website – see below. **Please contact us if you have lost your login info.**



Once logged in, scroll down to the "Current Downloads" and download [Structural Toolkit Tools].



## Current Downloads

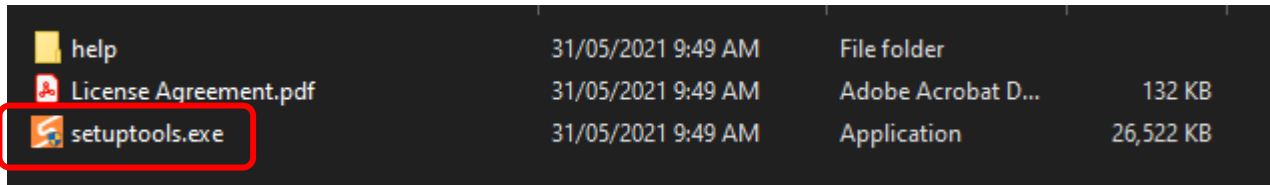
Structural Toolkit	Date	Revision
<a href="#">Structural Toolkit V5.4.3.6</a>	22 Apr 21 (Core 22 Apr 21)	5.4.3.6

\* Application for use with a single key (blue) or distributing to a workstation with access to a network key (red)  
 \* Requires .NET Framework 4.6, Visual C++ 2017 runtime, Windows 7, 8, 10

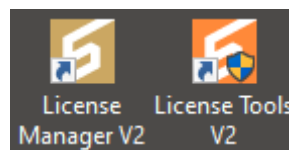
Utilities	Date	Revision
<a href="#">Structural Toolkit Tools V2.3.0.5</a>	22 Jan 21 (Core 22 Jan 21)	2.3.0.5
<a href="#">Structural Toolkit Updater V2.3.0.5</a>	22 Jan 21	2.3.0.5
<a href="#">Structural Toolkit PDF Manager V1.3.1.3</a>	13 Nov 20	1.3.1.3

\* Requires .NET Framework 4.6, Visual C++ 2017 runtime, Windows 7, 8, 10

Once downloaded, unzip the zip folder, and run the setup.



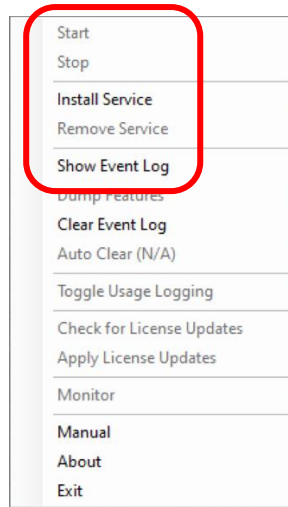
This will then install various licensing software for Structural Toolkit. Once installed, either the License Manager or License Tools needs to be run.



Either can be used to manage the Network License – refer the “Network License Quick Start” document for details.

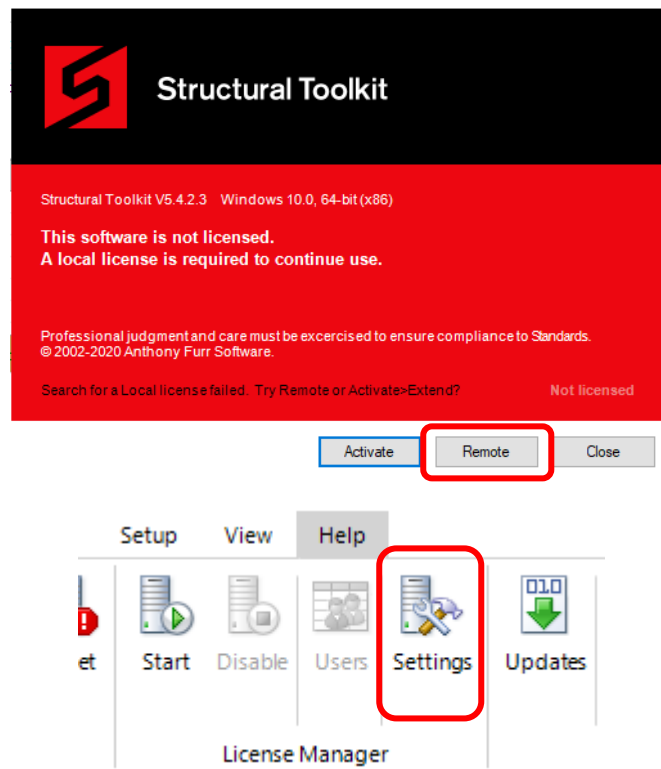
If using the License Manger, ensure the IP displayed in the [SERVER] tab is set to the static IP set earlier. If not, modify it with the [Settings] option. Ensure the [Start] button has been clicked, and the server should then be running. (Mutliple adaptaters, or VPN’s can often disguise the correct default ethernet IP).

If using the License Tools, after running the program, it will then need to be installed and run via the task bar – by right-clicking (bottom right of screen). Note that you can see information on the IP being used by clicking [Show Event Log].



## Connecting with Structural Toolkit

Once the server has been successfully migrated, all users will need to ensure their IP is set to the new server's IP (if it has been changed from the previous). This is either done upon opening Structural Toolkit by pressing [Remote], or in the [Help] tab of Structural Toolkit and pressing the "Settings" option.



If you have any questions or require further guidance, contact our support team.