



On-Demand Analysis

Rev 0, Updated 20 February 2020

On-Demand Analysis

With the On-Demand Analysis, network key license users can access the required number of Analysis licenses regardless of their number of Structural Toolkit licenses (Note that the number of Analysis licenses cannot exceed Structural Toolkit licences).

License Software Requirements

In order to use the On-Demand Analysis feature, a supported version of the licensing software is required. There are two ways to run the License software to manage and update the On-Demand Analysis feature:

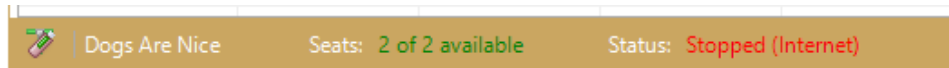
- Where the license manager software is used on a computer always logged on, refer to the **License Manager**
- Where the license manager software is used on a computer that is logged off, refer to the **License Service**

Both the License Manager and License Service applications are found in the License Tools distribution. Version 2.3 of the License Tools is required to use the On-Demand features.

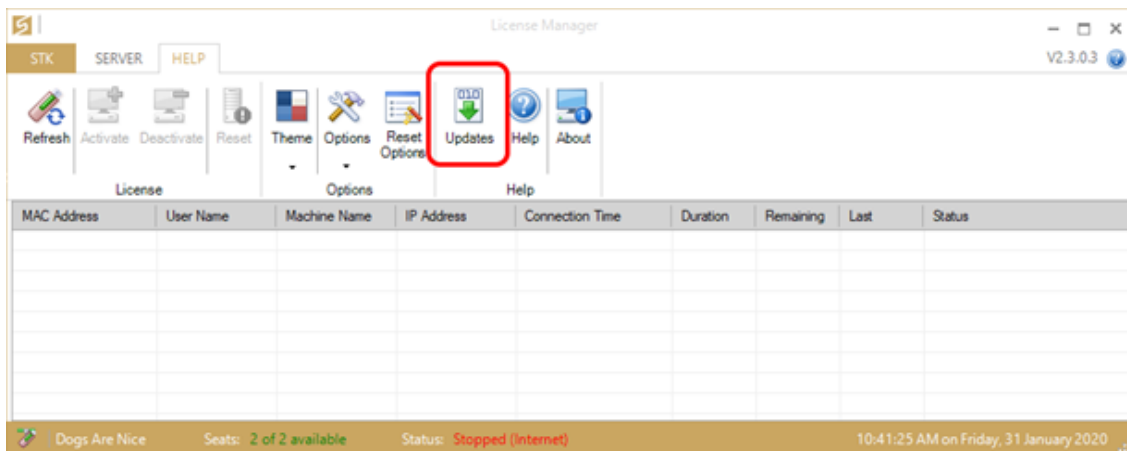


Updating the License Manager for On-Demand Analysis

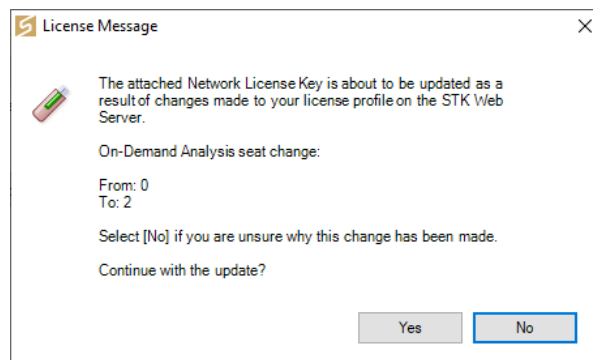
To enable On-Demand Analysis using the License Manager software, maximise the License Manager. Ensure that users are not logged in and press the [Stop] button on the [Server] tab. The Licensed User's name, and number of Structural Toolkit licenses is visible on the status bar at the bottom of the application.



To update the license features, select the [Updates] button on the [Help] tab.

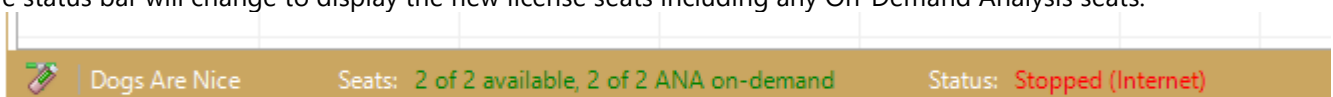


After clicking the update button, a dialog will appear prompting the features about to be updated.



Select [Yes] to update the license with the On-Demand Analysis seats.

The status bar will change to display the new license seats including any On-Demand Analysis seats.

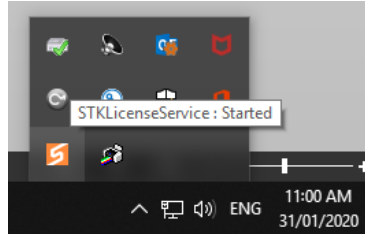


Press the [Start] button on the [Server] tab to restart the Manager. The On-Demand Analysis now needs to be enabled within Structural Toolkit. Refer to the **Enabling On-Demand Analysis in Structural Toolkit** section below.



Updating the License Service for the On-Demand Analysis

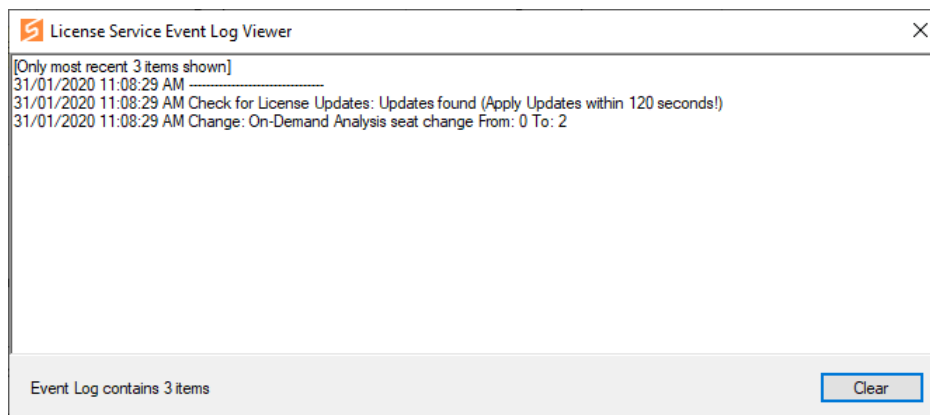
To enable On-Demand Analysis using the License Service, open the License Tools software and verify the icon is bright orange meaning it is operating.



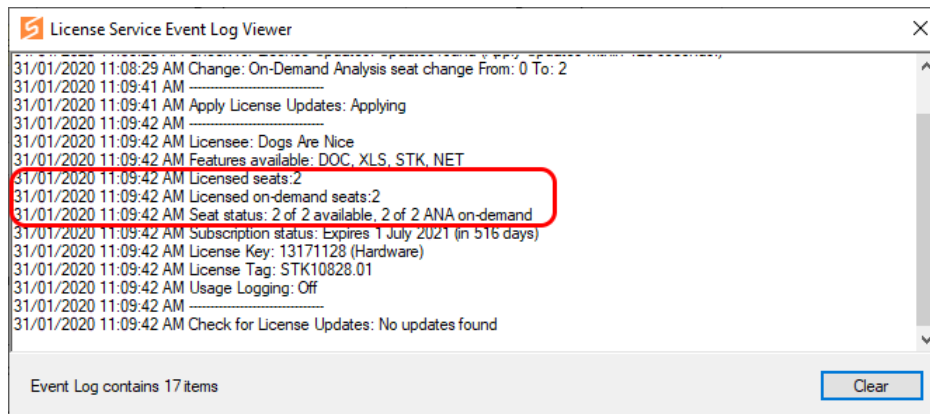
If the icon is not visible, start the Tools by clicking on the License Tools application shortcut.

If the icon is grey or light orange, the service may need to be installed or started – this can be done by right clicking the icon and selecting the relevant option.

Once the service is active, right click the icon and select "Check for License Updates". This will bring up a prompt, select [OK] which will then open the event log. If new license features are available, these will be visible in the Event Log viewer.



To apply the features changes, right click on the icon in the toolbar and select "Apply License Updates". The Event Log will report the features change once applied successfully.

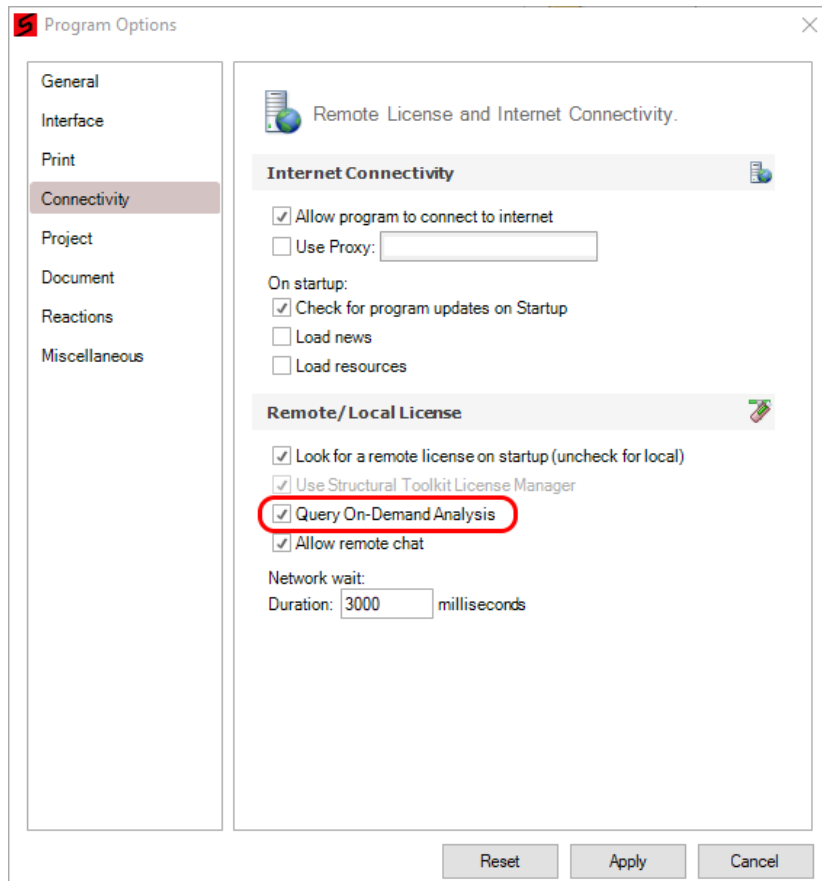


The On-Demand Analysis now needs to be enabled within Structural Toolkit. Refer to the **Enabling On-Demand Analysis in Structural Toolkit** section below.



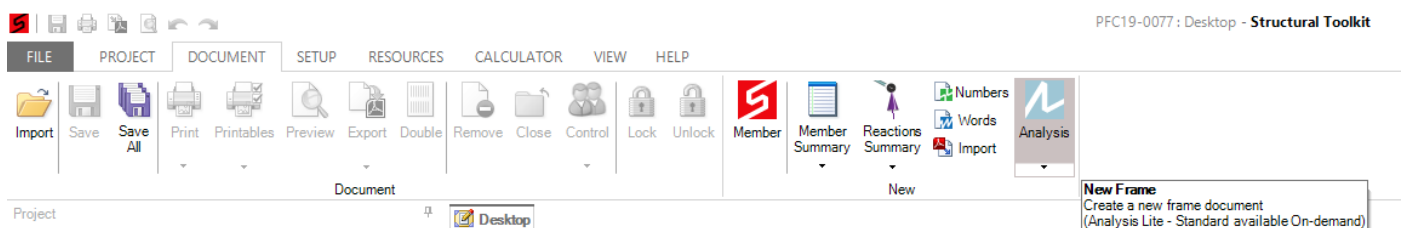
Enabling On-Demand Analysis in Structural Toolkit

To enable On-Demand Analysis within Structural Toolkit, select the [File] tab and open the [Options]. In the Options window, select the [Connectivity] tab and check the "Query On-Demand Analysis" box and click apply.



Close the window, select the [Help] tab and disconnect and reconnect to the License Manager/Service by selecting the [Disable] and [Start].

When On-Demand is available, the [Analysis] icon on the [Document] tab will be light blue.



If the [Analysis] icon shows as grey, the On-Demand is not available; and a program restart should enable the feature.