



How to Repair a Project

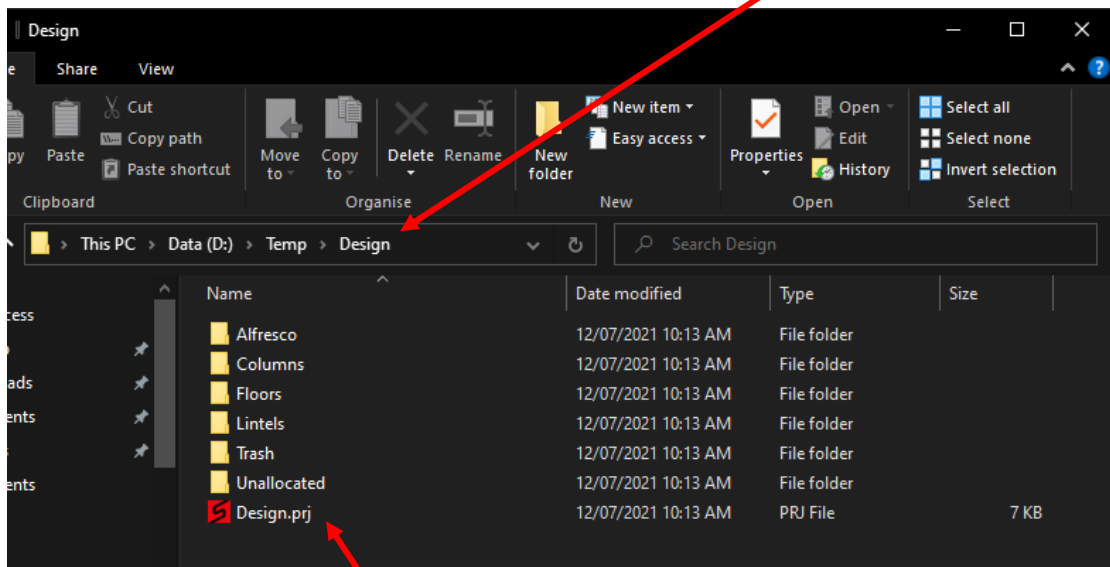
Rev 1, Updated 12 July 2021

If a project file becomes corrupted, it is generally possible to reconstruct it. This guide aims to show how this can be done.

Repairing a Project

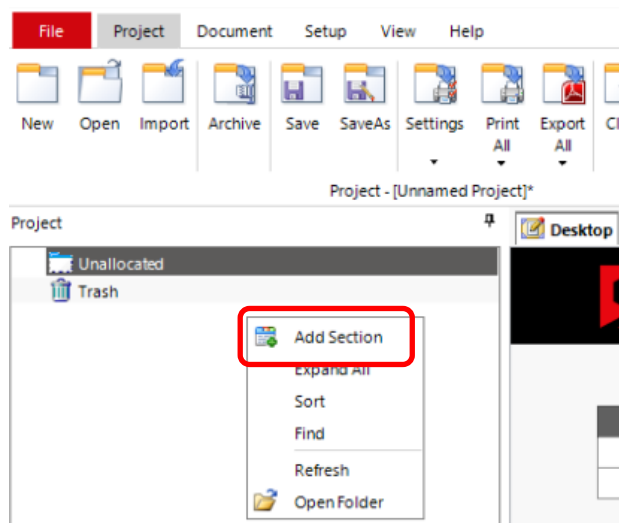
1. Backup the project folder to another location.
2. Open the File Explorer in Windows and look at the project contents.

Temporary backup location of Design project



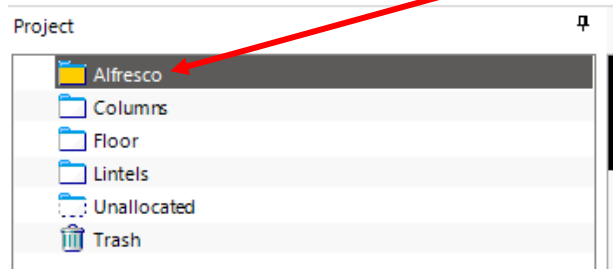
Corrupted project

3. Create a New Project and fill in the title information from the [Setup] tab. Then save into the desired location in your file system.
4. Add the sections you can see in the File Explorer window by right-clicking within the project pane to the left and clicking [Add Section].

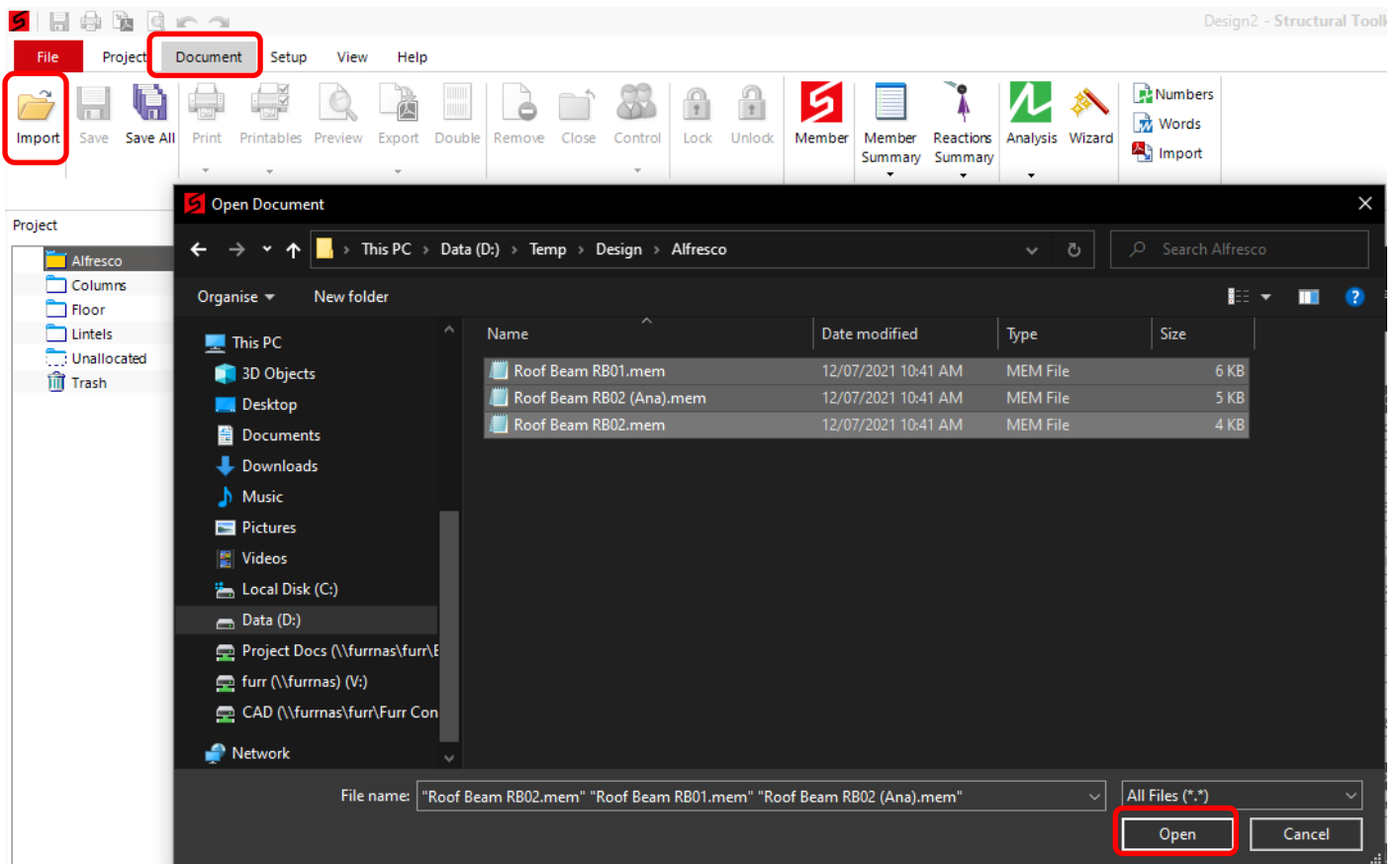




5. Make the section active by double-clicking on the section.

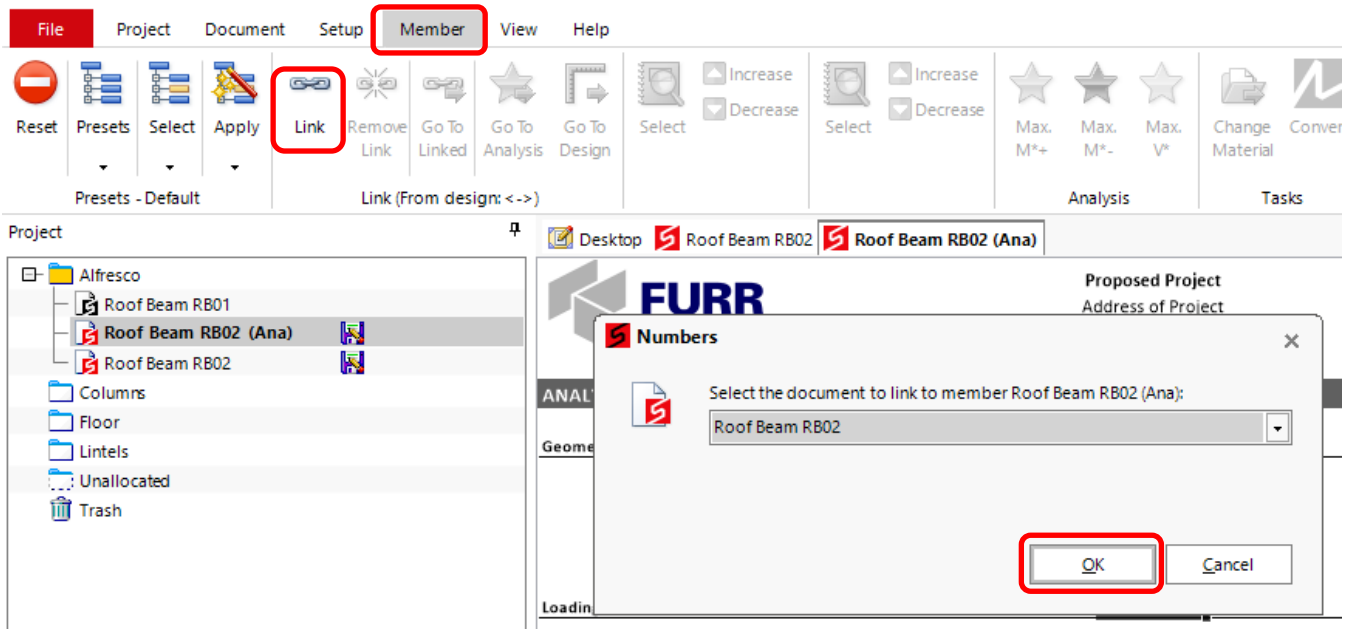


6. Under the [Document] tab, select [Import], and add the .mem (and .ana) files within each folder of the corrupted project. In this case, the first files to be added will be from the Alfresco section.





- Once the files have been imported, linked files will need to be relinked. To do this, open one of the (ana) files to be linked, select the [Member] tab and then press [Link].



- Once files in the section have been linked as required. Close all documents and repeat the process of steps 5-7 for each section.

Note that if reactions have been used, ensure all required files have been imported and press [Recalc All] under the [Project] tab to prevent any error messages.

Ensure the new project has been saved before continuing after the project has been repaired.

If you have any questions or require further guidance, contact our support team.