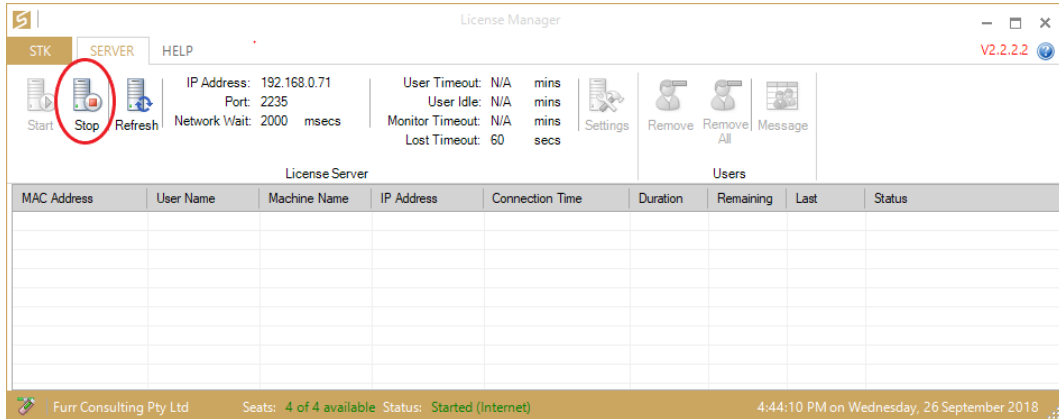




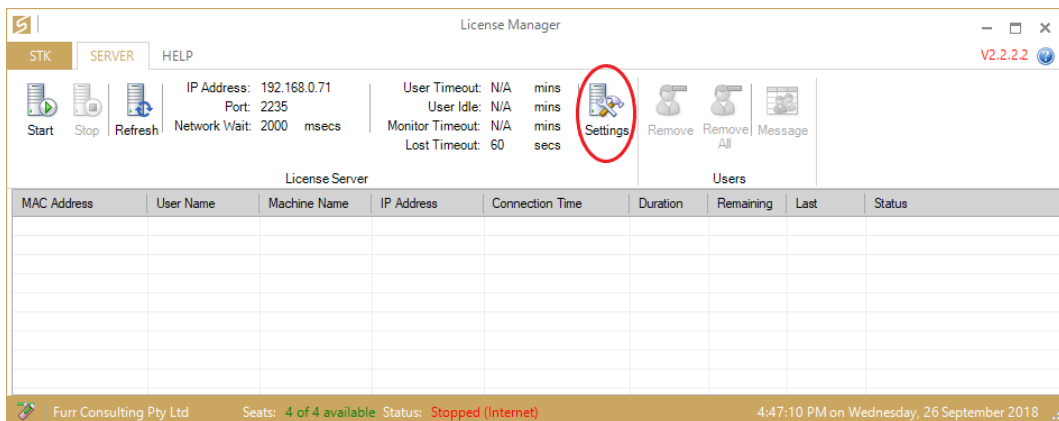
## Setting the User Idle Timeout Using the License Manager

Note: This feature applies to Version 2.2.1.1 of the license Tools and later.

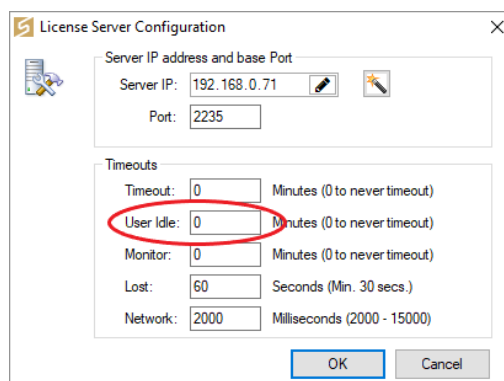
To setup the user idle timeout using the License Manager, stop the License Manger by clicking on the "Stop" button.



Next click on "Settings" button.



In the following dialogue, set the user idle time in terms of minutes and confirm the settings by clicking on "OK".

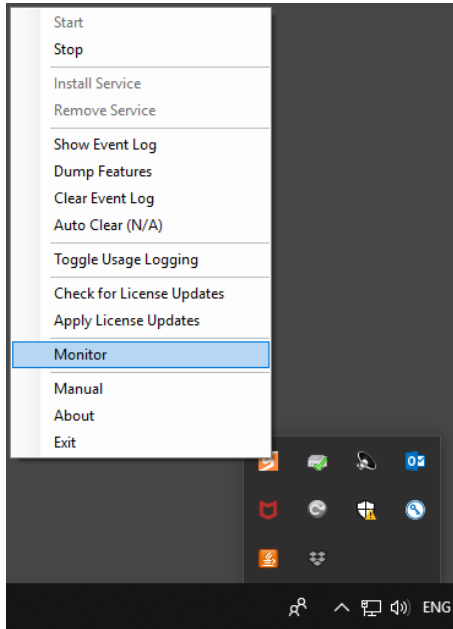


Once done, confirm the dialogue and start the License Manager by clicking on the "Start" button. The user idle should be active now.

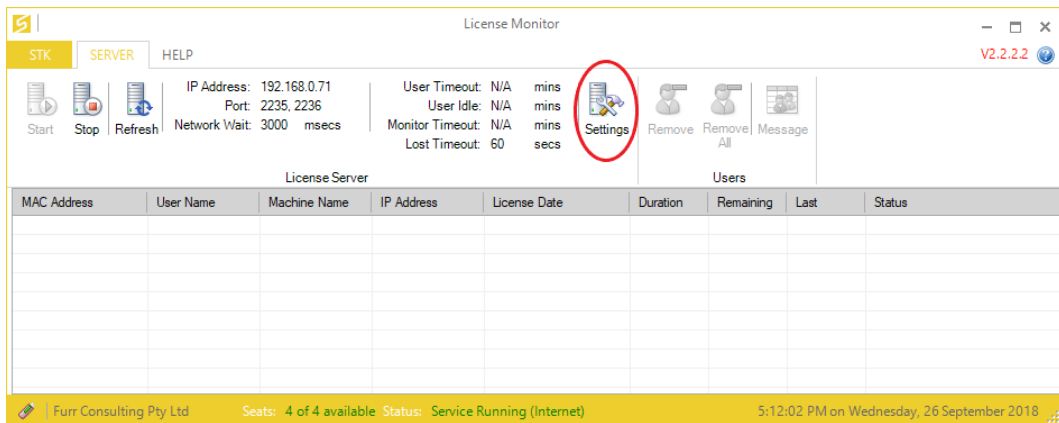


## Setting the User Idle Timeout Using the License Tools

To setup the user idle timeout using the License Tools, right click on the STK License Tools icon on the task bar and select "Monitor".



In the following dialogue, click on the Start button to connect the License Monitor to the License Service. Once connected, click on the "Settings" button.



In the following dialogue, set the user idle time in terms of minutes and confirm the settings by clicking on "OK".



The screenshot shows the 'License Server Configuration' dialog box. It has a title bar with a close button. The dialog is divided into three sections: 'Server IP address and base Port', 'Timeouts', and 'Service Logging'.  
- 'Server IP address and base Port': Server IP: 192.168.0.71, Port: 2235.  
- 'Timeouts':  
 - Timeout: 0 Minutes (0 to never timeout)  
 - User Idle: 0 Minutes (0 to never timeout) - This field is circled in red.  
 - Monitor: 0 Minutes (0 to never timeout)  
 - Lost: 60 Seconds (Min. 30 secs.)  
 - Network: 3000 Milliseconds (2000 - 15000)  
- 'Service Logging':  
 -  Log Connections  
 -  Auto Clear after 100 events (> 100)  
At the bottom are 'OK' and 'Cancel' buttons.

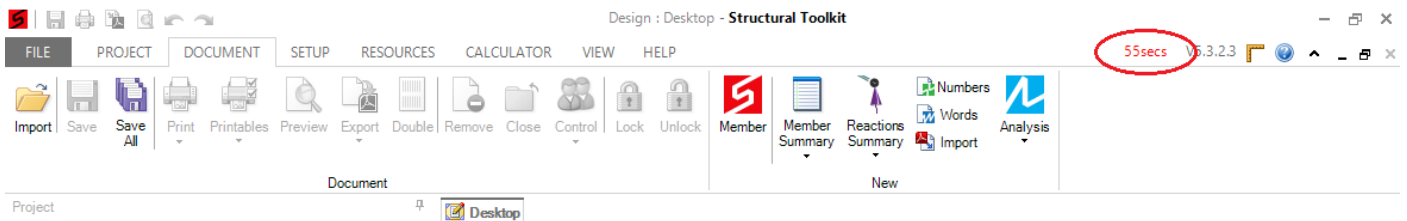
Restart the license service by doing a right click on the STK License Tools icon on the task bar and selecting "Stop" and "Start". The user idle should be active now.



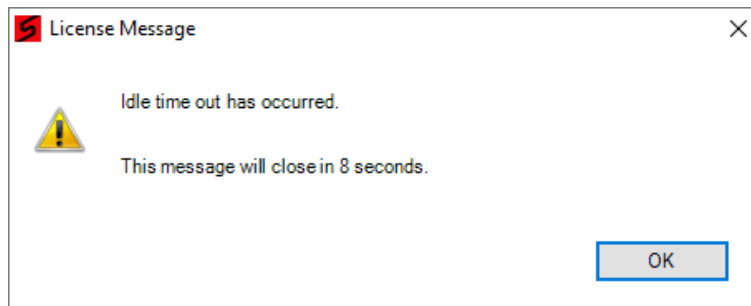
## Checking the Status of User Idle

After connecting Structural Toolkit to the remote license, a countdown timer appears on the top right hand side of the Structural Toolkit toolbar indicating the remaining time before the user idle timeout is reached.

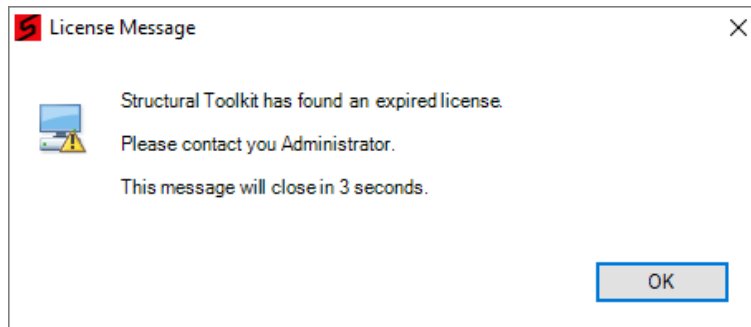
If any activity is detected on the Structural Toolkit window, the timer resets to the default timeout value.



If no activity is detected and the timeout is reached, the following message appears on the workstation indicating that the user will be removed from the server.



In the next window you will be notified that you have been disconnected from the license server.



Following the disconnection from the server, you will be prompted to save the project before the Structural Toolkit window is closed.

