



Setting up a Static IP

To use Structural Toolkit network dongle features, the dongle must be attached to a PC which is accessible via a local network.

By default, Windows obtains a new network address (IP address) during each startup. This is called a dynamic IP address. This behavior can cause issues when using a network dongle; as the clients need to obtain the new IP address after each server startup.

This issue can be resolved by setting the IP address of the PC with the network dongle to a static IP.

1. In the Start Menu type "cmd" to access the command prompt interface.
2. Type in "ipconfig" and press enter. This will output your computer's networking information on the prompt window.

```
C:\>ipconfig

Windows IP Configuration

Unknown adapter VPN - VPN Client:

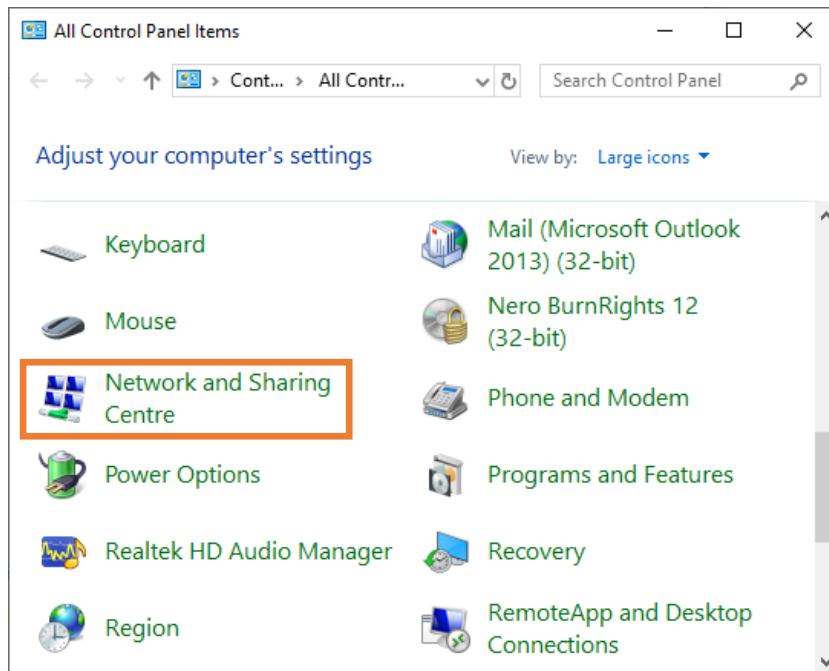
    Media State . . . . . : Media disconnected
    Connection-specific DNS Suffix  . :

Ethernet adapter Ethernet:

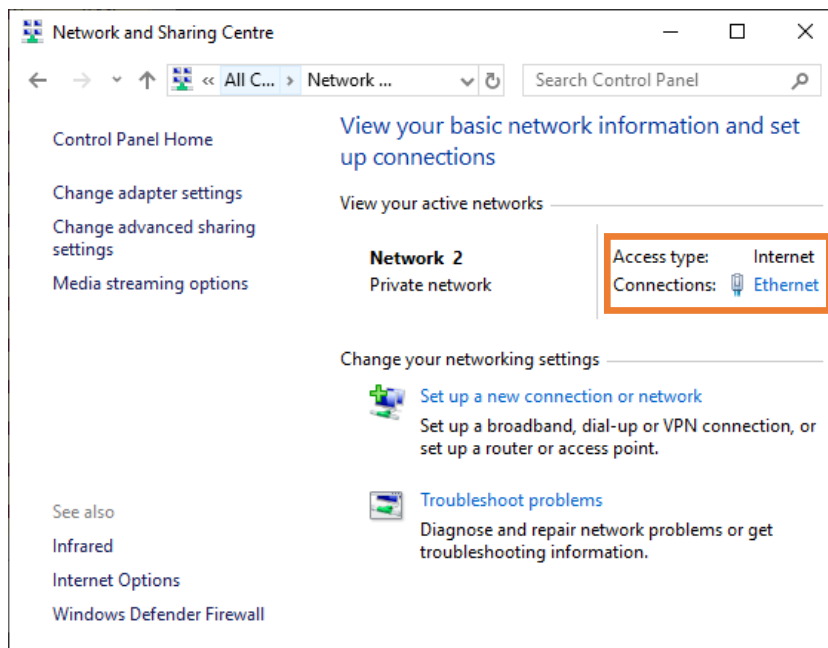
    Connection-specific DNS Suffix  . :
    IPv6 Address. . . . . : 2001:8000:148b:f100:d9c0:d768:7348:91cf
    Temporary IPv6 Address. . . . . : 2001:8000:148b:f100:91c4:7149:a225:eb4f
    Link-local IPv6 Address . . . . . : fe80::d9c0:d768:7348:91cf%9
    IPv4 Address. . . . . : 192.168.0.71
    Subnet Mask . . . . . : 255.255.255.0
    Default Gateway . . . . . : fe80::a02:8eff:feed:ee44%9
                                192.168.0.1

C:\>
```

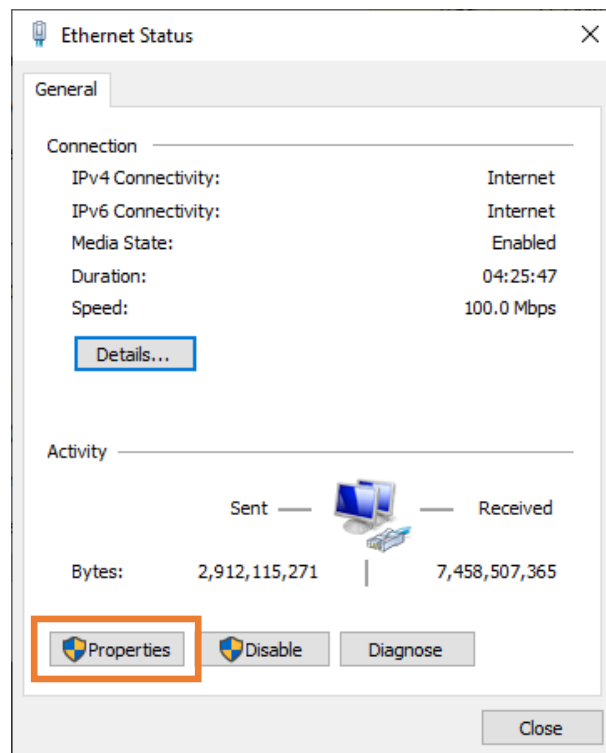
3. Go to the Control Panel, and select "Network and Sharing Centre"



4. Select the default network connection

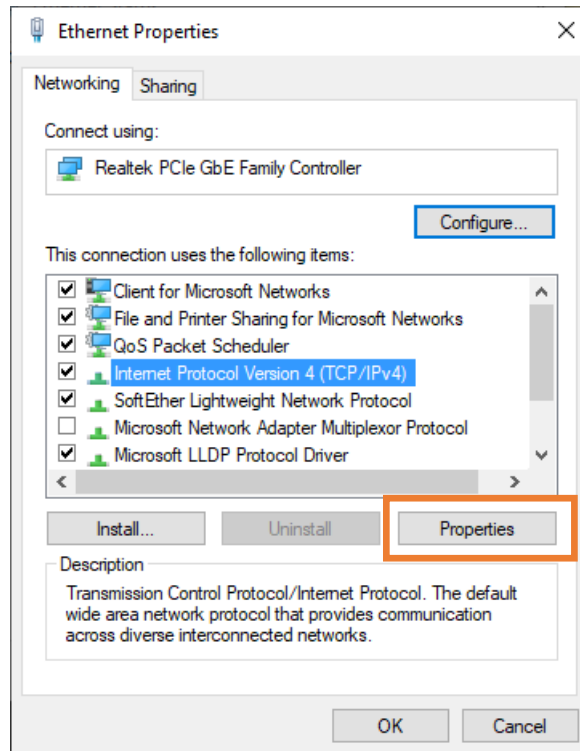


5. Select "Properties" in the popup menu.





6. Select "Internet Protocol Version 4 (TCP/IPv4)" and click on "Properties".



7. Fill in the desired "IP address", Subnet mask" and "Default gateway" using the values from the ipconfig command in step 2. You can use any IP address that has not been already used by another PC in your network. Note that printers, routers and NAS drives generally have a static IP. Type in 8.8.8.8 for the "Preferred DNS server" and 8.8.4.4 for the "Alternative DNS server" to use Google's DNS servers or alternatively type in the IP of your preferred DNS server. Confirm the new settings by clicking on "OK" button.

