

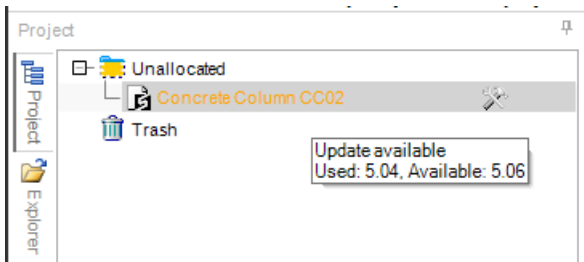


Updating a Design

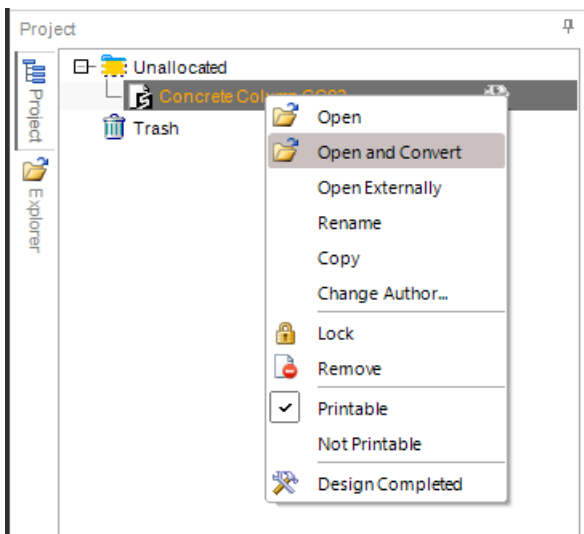
Updated design templates

A member design that is orange in the Project Tree indicates that a newer design template is available.

By default, opening them does not update to the latest template (this behavior can be changed in the File > Options, see below)



Hovering over the member, shows the information of the update.



To update the design, right mouse click on the member design, and select Open and Convert.

With multiple older modules, you can also select them and right-click > Open and Convert Selected.



Changing the default module update behaviour

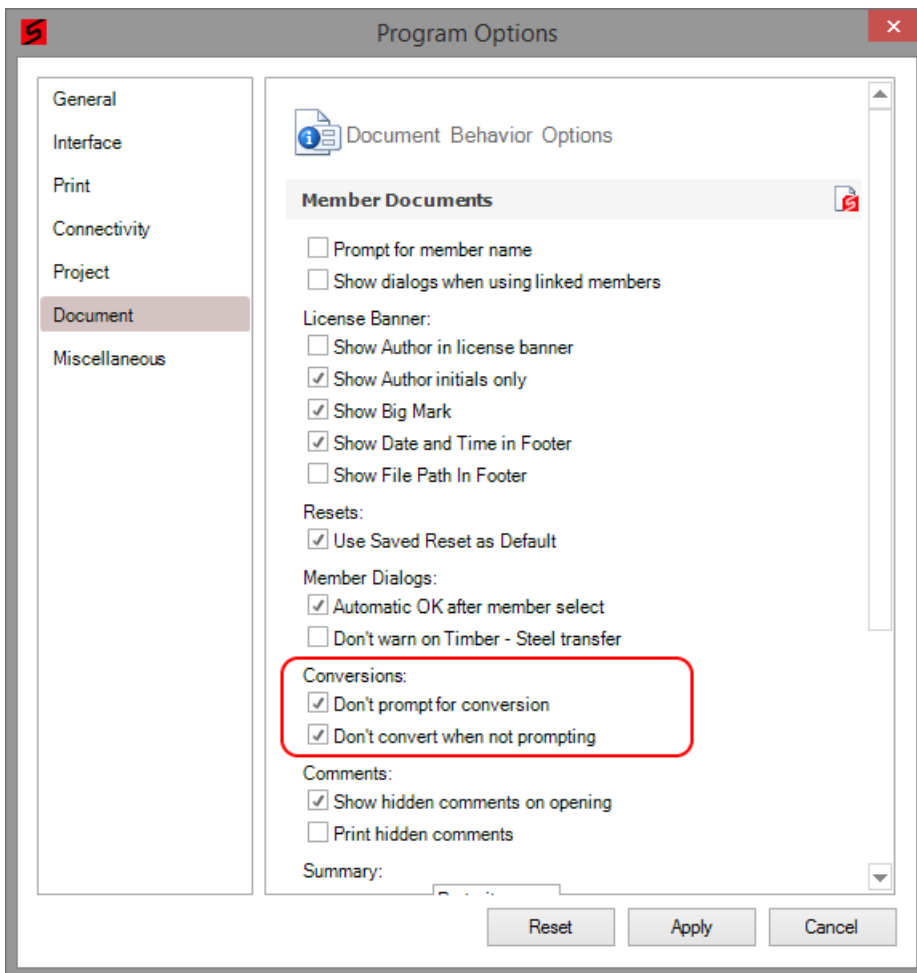
By default, a module which has an updated template will open using the old template.

In the options, you can allow Structural Toolkit to alter this behaviour.

Structural Toolkit will prompt for a conversions if you untick the “Don’t prompt for conversion”.

By unticking the “Don’t convert when not prompting”, the default behaviour will be to convert without asking.

If you have a project and want to convert a number, it is best to untick both these, and either right-click on a Section, and “Open Documents”, or select the members in the Project Tree and open them using the right-mouse click using Open Selected.





Opening older design modules

You can access the full library of older version by holding the Control key while selecting the module.

The screenshot shows the main interface of the Structural Toolkit software. It features several panels for different design modules: FOOTINGS, CONCRETE, STEEL, and STEEL CONNECTIONS. The 'CONCRETE' panel is highlighted, and the 'Columns' option is selected, indicated by an orange border. A 'Member Message' dialog box is open, displaying a list of version updates for the 'Concrete Column' module. The dialog box has a title bar with the Structural Toolkit logo and a close button. The message text reads: 'Select the base to use for Concrete Column:'. Below this is a dropdown menu showing 'V5.06 - AS3600-2009 | Added option to bypass Eurocode limits f'. A scrollable list of versions follows, with the most recent version highlighted in blue. The list includes: V5.06 - AS3600-2009 | Added option to bypass Eurocode limits for Method A; V5.05 - AS3600-2009 | Increased to 50 layers; V5.04 - AS3600-2009 | Corrected n, w and b' to use Ac rather than Ag; V5.03 - AS3600-2009 | Confinement added; V5.02 - AS3600-2009 | Method B for Fire, AS3600-2001 FRL method, revised FRP; V5.01 - AS3600-2009 | Corrected minimum shear reinf t; V5.00 - AS3600-2009 | Version 5, Tension on diagrams, refined calculation and interp. points, simplified r opti; V4.06 - AS3600-2009 | Corrected confinement interpolation and added design points on graph; V4.05 - AS3600-2009 | fNu for fire considers eccentricity; V4.04 - AS3600-2009 | Corrected confinement requirements; V4.03 - AS3600-2009 | Corrected single curvature for min. moments; V4.02 - AS3600-2009 | AS3600 Amdt 2, Fire load level; V4.01 - AS3600-2009 | Revised to new standard; V4.00 - AS3600-2001 | Version 4.

The module will show up as orange in the project Tree.